

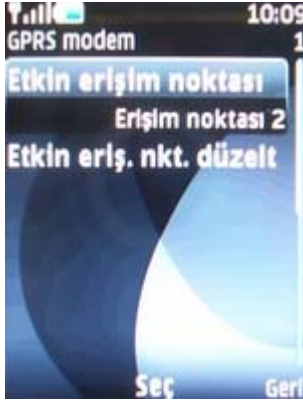
Nokia telefonlarda Kızılötesi bağlantısı

Telefon üzerinde Erişim noktası oluşturmak ;

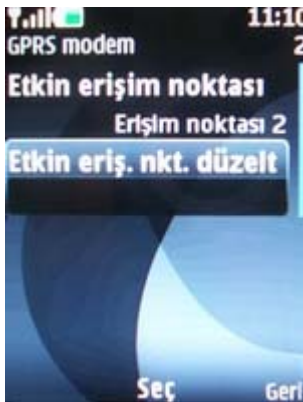
1-Menu -> Ayarlar -> Bağlantı -> Paket veri -> Seç



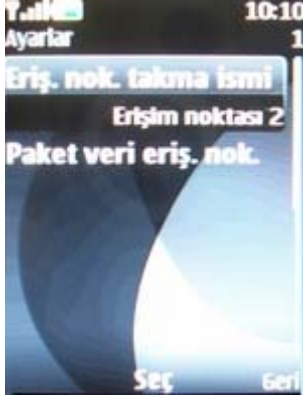
2-Menu -> Ayarlar -> Bağlantı -> Paket veri -> Paket veri ayarları -> Etkin erişim noktasını Seç



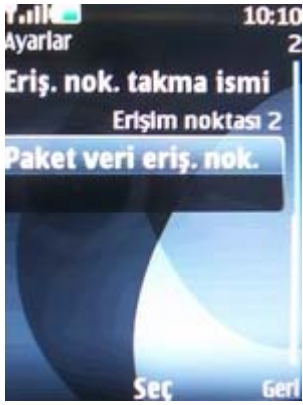
3-Menu -> Ayarlar -> Bağlantı -> Paket veri -> Paket veri ayarları -> Etkin erişim noktası düzelt'i Seç



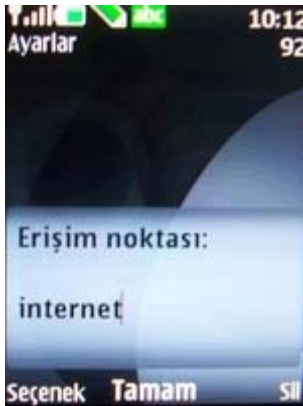
4-Menu -> Ayarlar -> Bağlantı -> Paket veri -> Paket veri ayarları -> Etkin erişim noktası -> Erişim noktası takma ismi **Turkcell Internet** olarak değiştirilir.



5-Paket veri erişim noktasını seç



6-Erişim noktası olarak **internet** yazılarak Tamam seçilir.



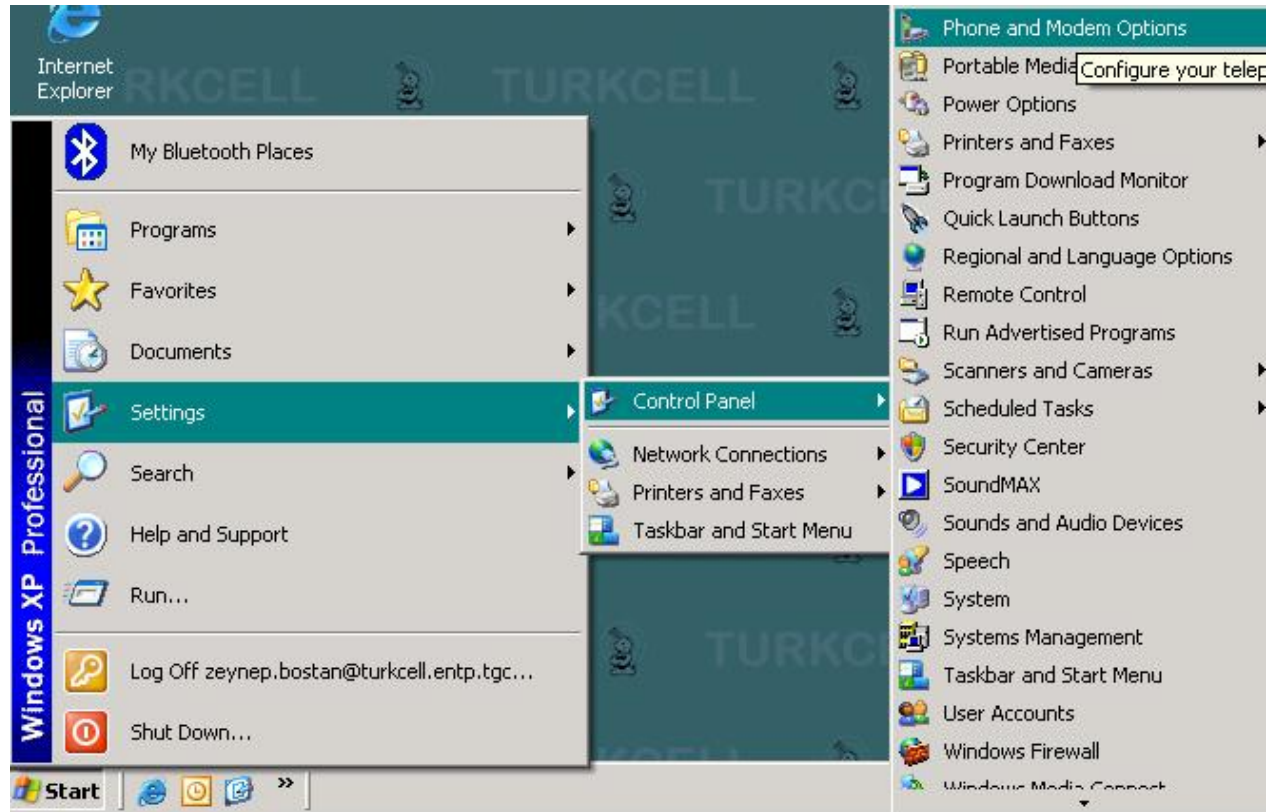
Erişim noktası tanımlandıktan sonra Kızılötesi açılır.

1-Menu-> Bağlantı -> Bluetooth-> Kızılötesi -> Açık

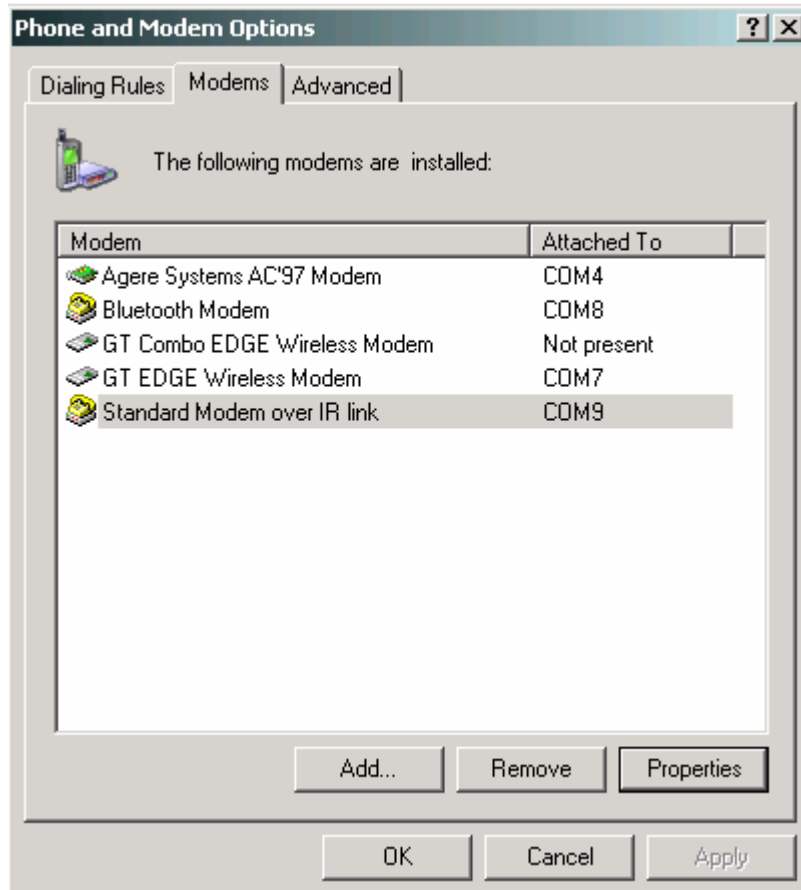
2-Telefonun Kızılötesi bilgisayarın kızılötesi portuna tutulur. Bilgisayar ile telefonun birbirini görmesi sağlanır.

Bilgisayardan kontrol etmek için

1-Start -> Settings-> Control modem -> Phone and Modem Options



2-Start -> Settings-> Control modem -> Phone and Modem Options -> Modems -> Satandard Modem IR Link (6230i gibi telefonun kendi modemi)'den Modemin aktif olup olmadıđına bakılır.



Bilgisayar üzerinde yapılacak işlemler ;

1- Start -> Settings -> Network connection -> New Connection wizard



New Connection Wizard

Network Connection Type

What do you want to do?



Connect to the Internet

Connect to the Internet so you can browse the Web and read email.

Connect to the network at my workplace

Connect to a business network (using dial-up or VPN) so you can work from home, a field office, or another location.

Set up an advanced connection

Connect directly to another computer using your serial, parallel, or infrared port, or set up this computer so that other computers can connect to it.

< Back

Next >

Cancel

New Connection Wizard

Getting Ready

The wizard is preparing to set up your Internet connection.



How do you want to connect to the Internet?

Choose from a list of Internet service providers (ISPs)

Set up my connection manually

For a dial-up connection, you will need your account name, password, and a phone number for your ISP. For a broadband account, you won't need a phone number.

Use the CD I got from an ISP

< Back

Next >

Cancel

New Connection Wizard

Internet Connection

How do you want to connect to the Internet?



Connect using a dial-up modem

This type of connection uses a modem and a regular or ISDN phone line.

Connect using a broadband connection that requires a user name and password

This is a high-speed connection using either a DSL or cable modem. Your ISP may refer to this type of connection as PPPoE.

Connect using a broadband connection that is always on

This is a high-speed connection using either a cable modem, DSL or LAN connection. It is always active, and doesn't require you to sign in.

< Back

Next >

Cancel

New Connection Wizard

Select a Device
This is the device that will be used to make the connection.

You have more than one dial-up device on your computer.
Select the devices to use in this connection:

- Modem - Agere Systems AC'97 Modem (COM4)
- Modem - Bluetooth Modem (COM8)
- Modem - GT EDGE Wireless Modem (COM7)
- Modem - Standard Modem over IR link (COM9)

< Back Next > Cancel

İstenilen isim verilebilir.

New Connection Wizard

Connection Name
What is the name of the service that provides your Internet connection?

Type the name of your ISP in the following box.

ISP Name

Turkcell Internet


The name you type here will be the name of the connection you are creating.

< Back Next > Cancel

Telefon numarası girilir.

New Connection Wizard

Phone Number to Dial
What is your ISP's phone number?



Type the phone number below.


Phone number:

You might need to include a "1" or the area code, or both. If you are not sure you need the extra numbers, dial the phone number on your telephone. If you hear a modem sound, the number dialed is correct.

< Back Next > Cancel

New Connection Wizard

Connection Availability
You can make the new connection available to any user or only to yourself.



A connection that is created for your use only is saved in your user account and is not available unless you are logged on.

Create this connection for:


Anyone's use
 My use only

< Back Next > Cancel

Turkcell için Kullanıcı adı ve şifre kullanılmayacak. Fakat farklı bir ISP'ye bağlantı yapılacaksa Kullanılacak ISP'nin Kullanıcı adı ve şifresi girilmesi gerekmektedir.

New Connection Wizard

Internet Account Information
You will need an account name and password to sign in to your Internet account.



Type an ISP account name and password, then write down this information and store it in a safe place. (If you have forgotten an existing account name or password, contact your ISP.)

User name:

Password:

Confirm password:

Use this account name and password when anyone connects to the Internet from this computer

Make this the default Internet connection

< Back Next > Cancel

İsteniyorsa Add a shortcut işaretlenerek masa üstüne atılır.



16-Gelen ekranda properties seçilerek kullanılacak modemın doğruluđu kontrol edilir.

Connect BluetoothConnection



User name:

Password:

Save this user name and password for the following users:

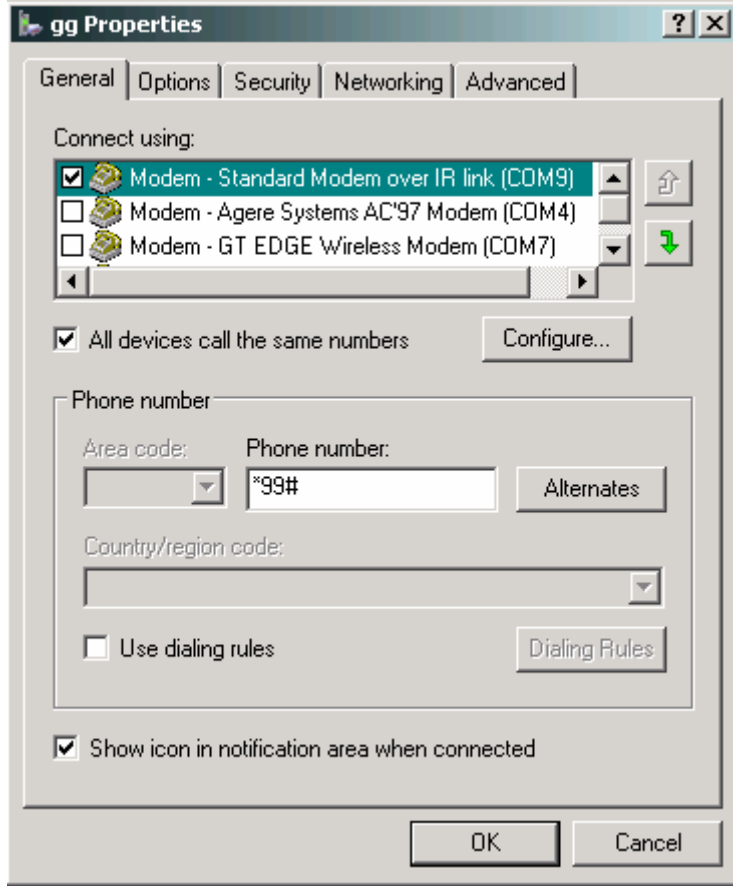
Me only

Anyone who uses this computer

Dial:

Dial Cancel Properties Help

17-İşaretli başka modemler varsa onlar kaldırılır.



18-Dial tusuna basılır .



Bağlantı gerçekleşir.